



Experts in **Surface Finishing Solutions**



- ☎ +91-9625716531
- ☎ +91-8076722141
- ☎ +91-9899333748
- 🌐 www.surtechpsm.com





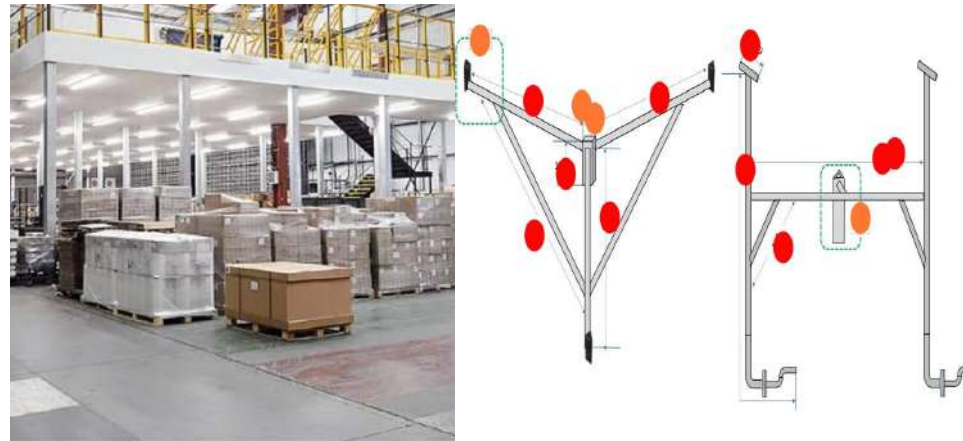
About Surtech PSM

Welcome to Surtech PSM

We value your time & appreciate your interest in our company. **Surtech PSM** is in Industrial Finishing business with core competency in **design, engineering, procurement, construction and commissioning of surface finishing plants for automotive & general purpose painting.** We are capable of delivering semiautomatic, fully automatic plants based on customer requirements. We follow the concept of continuous improvement, understand customer's requirement and implement most suitable engineered solution.



Pretreatment Plants



Fabrication and Mezzanines.



Ducting



Paint Spray Booths



Powder Coating Plants



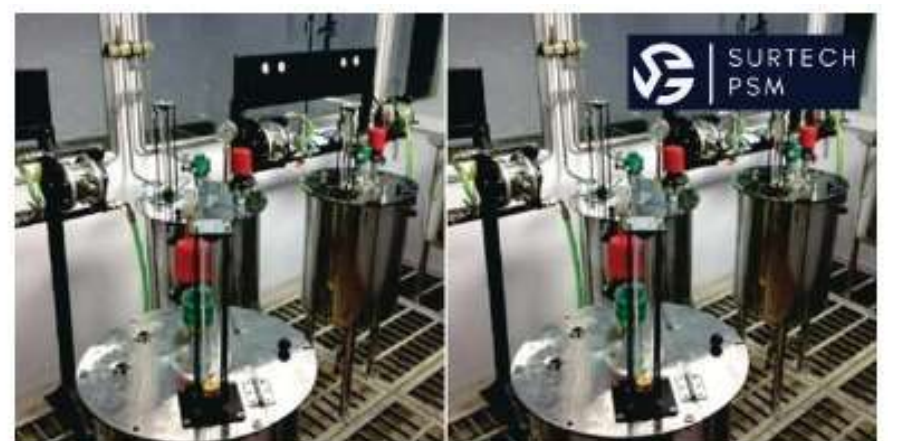
Liquid Painting Plants



UV & IR Painting Lines



Material Handling System



Accessories For Paint Shop



E Coat & Autophoretic Coating Lines



Wood Effect & Water Film Transfer Lines



Nozzles



Ceiling Filters



Paint Booth Filters



Filter Media Pad



AHU Filters



Hepa Filters



Ceiling Diffuser



Terminal Filter Box



Cellulose Pad



Air Purifier Filter



Pocket Filter



Air Grille



Pre Filter



Activated Carbon Filter



Filter Frame



Damper

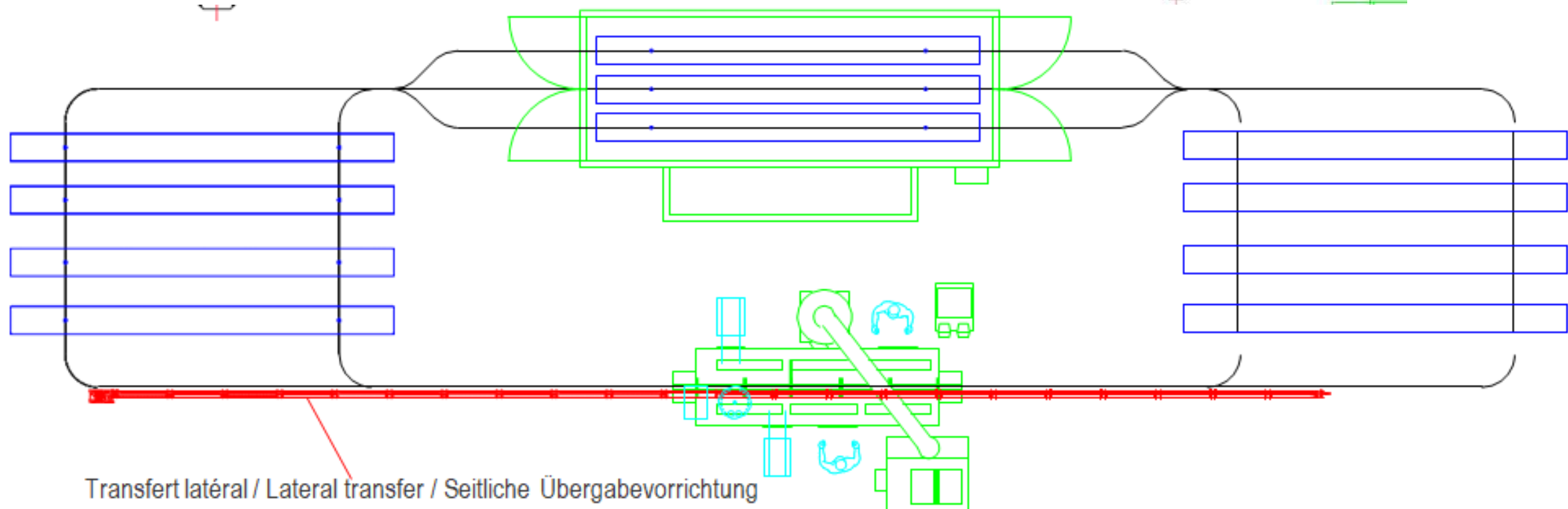
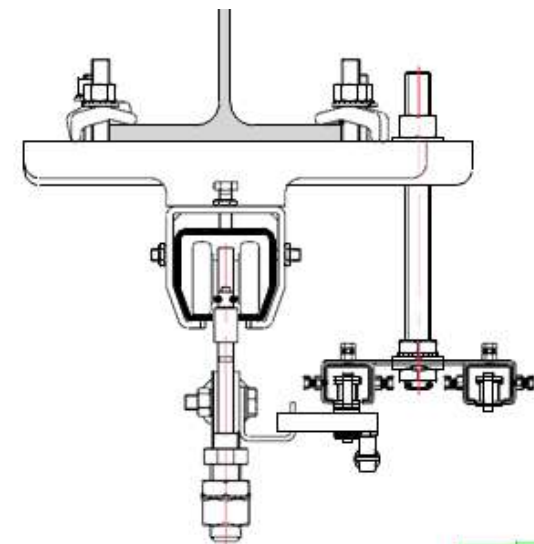


Carbon Filter



Cooling Coils

Our Gallery Captured Moments In Surtech PSM



PVC Braided Hose

Surtech PSM offers two **grades of PVC** which cover a wide range of industrial applications for the **transportation of various fluids**.

Product Advantages

Food-Grade PVC Monograde tubing reinforced with a braided polyester ply
 Flexible: space saving during installation
 Translucent for visual identification:

- of the fluid
- of inner cleanliness
- of fluid flow

Food-grade, without phthalates
 Silicone-free

Industrial PVC Tubing with a braided polyester ply between 2 grades of PVC
 Resistant to abrasion, impact and crushing
 Increased durability
 Lightweight and easy-to-use
 Silicone-free



Applications

- Robotics
- In-Plant Automotive
- Pneumatics
- Semi-Conductors
- Textile
- Packaging
- Vacuum

Technical Characteristics

Hose	Food-Grade PVC	Industrial PVC
Compatible Fluids	Compressed air, other fluids	Compressed air
Working Pressure	0 to 15 bar	0 to 15 bar
Working Temperature	-20°C to +70°C	-25°C to +60°C
Component Materials	Translucent food-grade PVC, phthalate-free with polyester braid	Industrial blue PVC, multi-layer, with polyester braid

Regulations

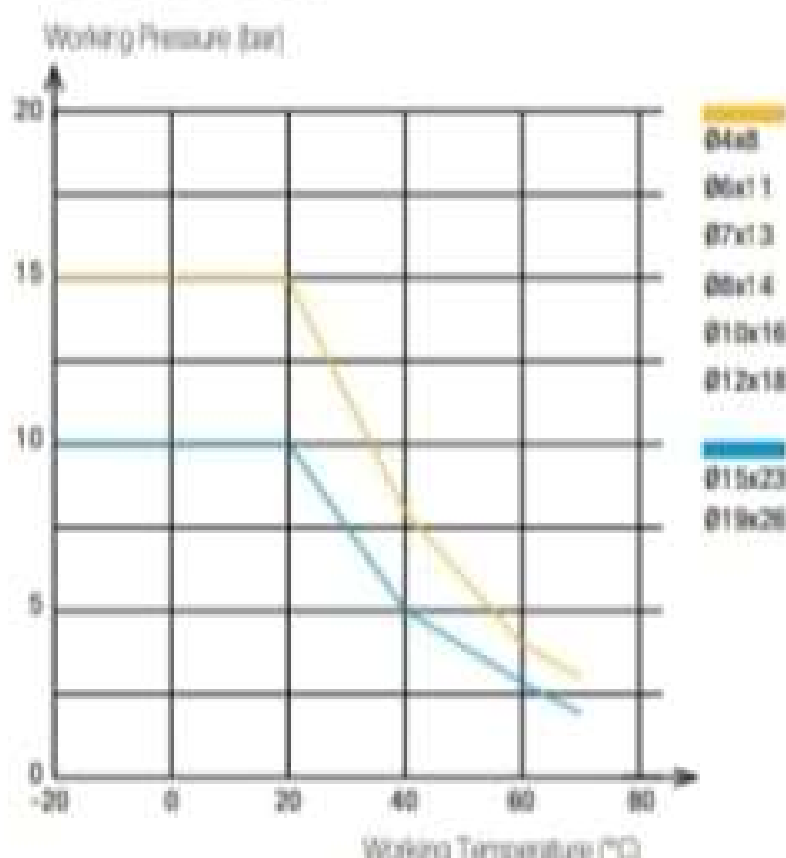
Food-Grade PVC
 FDA: 21 CFR 177.1550
 RG: 1907/2006 (REACH)
 RG: 1935/2004
 DI: 2002/95/EC (RoHS), 2011/65/EC
 DI: 2007/11/EC (phthalates)

Industrial PVC
 DI: 97/23/CE (PED)
 RG: 1907/2006 (REACH)
 DI: 2002/95/EC (RoHS), 2011/65/EC

Reliable performance is dependent upon the type of fluid conveyed and fittings being used.

Hose Performance

Food-Grade PVC



Hose Type	Hose I.D.	Hose I.D. Tolerance
Food-Grade PVC	4 to 6 mm	+0.5 / -0.5
	7 to 12 mm	+0.6 / -0.6
	15 to 19 mm	+0.8 / -0.8
Industrial PVC	6.3 mm	+0.3 / -0.3
	9 mm	+0.5 / -0.5
	12.7 mm	+0.6 / -0.6

Packaging

Reel: 25 m, 50 m
 (with protective plastic bag)

To calculate burst pressure, the values in these graphs should be multiplied by 3.

Braided PU Recoil Hose

This recoil hose offers all the advantages of polyurethane, combining the **durability** and **kink resistance** of bulkier braided hoses with great **elasticity** and maximum **flexibility**.

Product Advantages

Excellent Mechanical Properties

- Unsurpassed resistance to abrasion: 10 times better than rubber, polyamide and non-braided polyurethane
- Excellent flexibility and coil memory: minimizes work fatigue
- Highly kink and crush-resistant
- Silicone-free

Ready-to-Use

- Pre-assembled threaded fittings
- Tube ends protected with a plastic spring
- Lightweight for easy handling
- 3 lengths available
- Translucent blue: visibility of the fluid



- Machine Tools
- Industrial Assembly
- Pneumatics
- In-Plant Automotive Workshops

Applications

Technical Characteristics

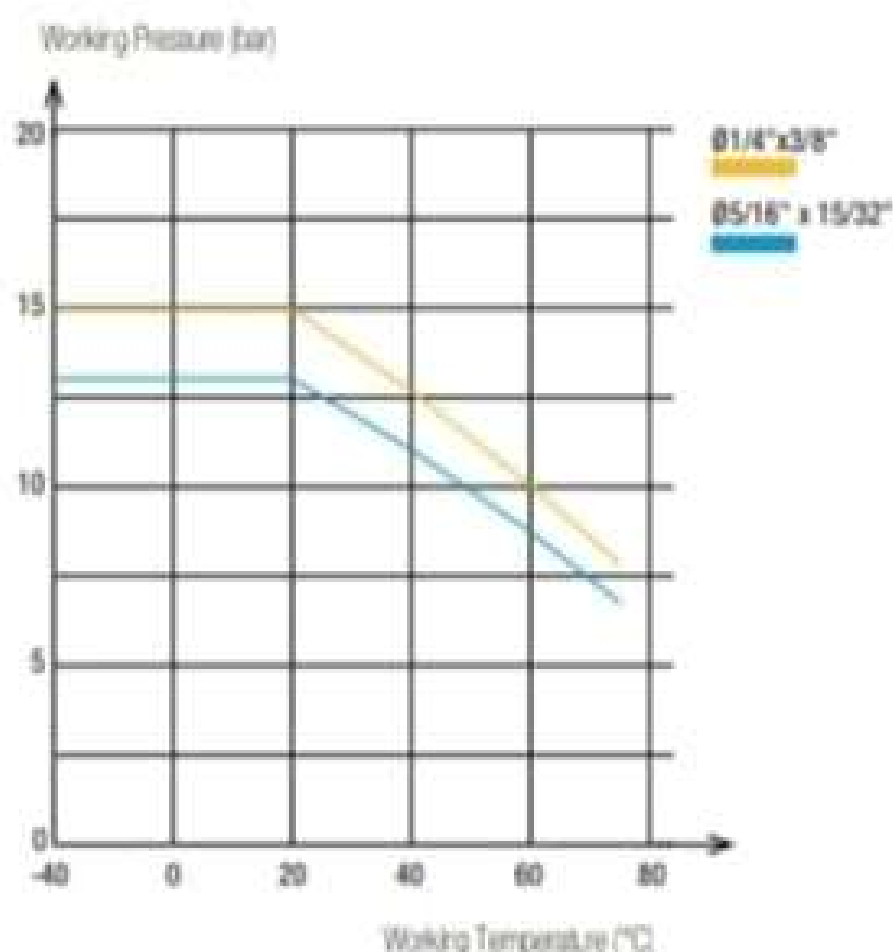
Compatible Fluids	Compressed air Other fluids: please consult us
Working Pressure	0 to 15 bar
Working Temperature	-40°C to +75°C
Component Materials	Polyurethane (85 Shore A)

Regulations

- DI: 97/23/EC (PED)
- RG: 1907/2008 (REACH)
- DI: 2002/95/EC (RoHS), 2011/65/EC

Reliable performance is dependent upon the type of fluid conveyed and fittings being used.

Performance of Braided PU Recoil Hose



Hose O.D.	Hose I.D.	Hose I.D. Tolerance
3/8"	1/4"	+/- 0.005"
15/32"	5/16"	

Connected to Surtech PSM push-in fittings, the calibration of PU tubing ensures perfect sealing.

Packaging

Plastic bags: 3 m to 7.5 m

To calculate burst pressure, the values in this graph should be multiplied by 4.

Anti-Spark PU Tubing

Combining **outstanding spark resistance** with superb **flexibility**, this range is perfectly suited for welding applications.

Two types of PU - ether with PVC sheath or single layer ether - are available and allow **rapid installation** with Surtech PSM push-in fittings.

Product Advantages

PU with PVC Sheath

- High resistance to kinking and abrasion
- Non-adhesive jacket facilitating sheath removal
- Fluid direction marking
- Self-extinguishing sheath, protecting the inner tubing
- Silicone-free

Single Layer PU

- Minimum bend radius for maximum space saving
- Significant flexibility for rapid cycling
- Good chemical resistance
- Flow direction marking
- Fireproof material
- Silicone-free



- Applications
- Industrial Machinery
 - Compressed Air
 - Robotics
 - Mechanical Constraints
 - Cooling
 - Welding
 - Cabling

Technical Characteristics

Compatible Fluids	Industrial fluids, compressed air, coolants
Working Pressure	Vacuum to 14 bar
Working Temperature	-20°C to +70°C
Component Materials	PU ether with PVC sheath PU ether single layer

O.D. of Tube	Sheath Removal Length for LF 3600 (mm)
4 mm	15± 1
6 mm	18± 1
8 mm	19± 1
10 mm	24± 1
12 mm	25± 1

Regulations

UL94 V2 to V0 (Fire resistance, depending on the type of tubing)
 DI: 2002/95/EC (RoHS),
 2011/65/EC
 RG: 1907/2006 (REACH)

Packaging

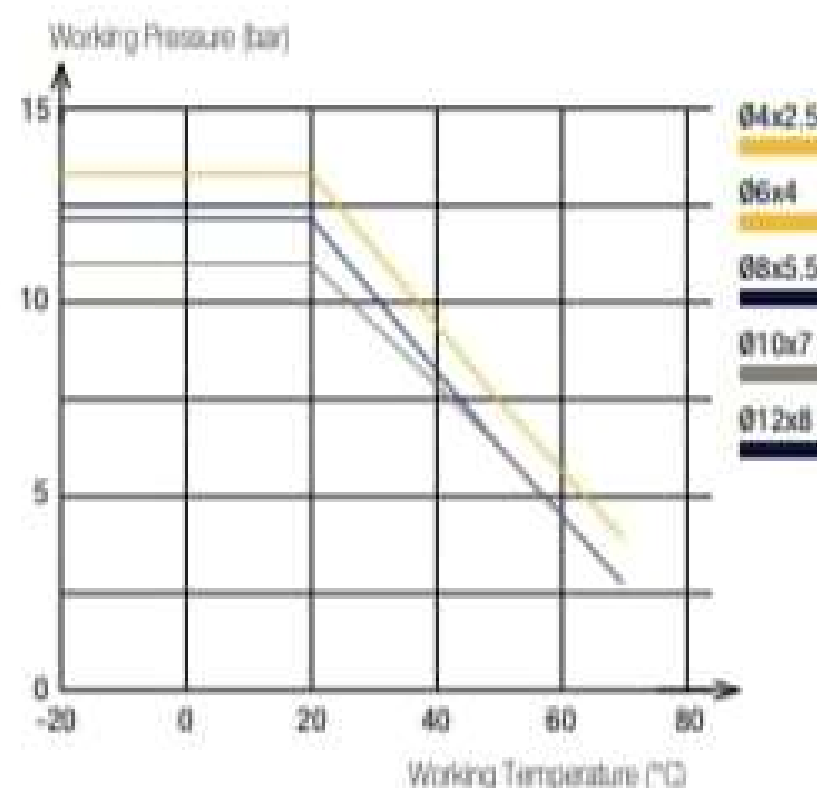
Tube pack: 25 m, 100 m

Reliable performance is dependent upon the type of fluid conveyed and fittings being used. Use is guaranteed with a vacuum of 755 mm Hg (99% vacuum).

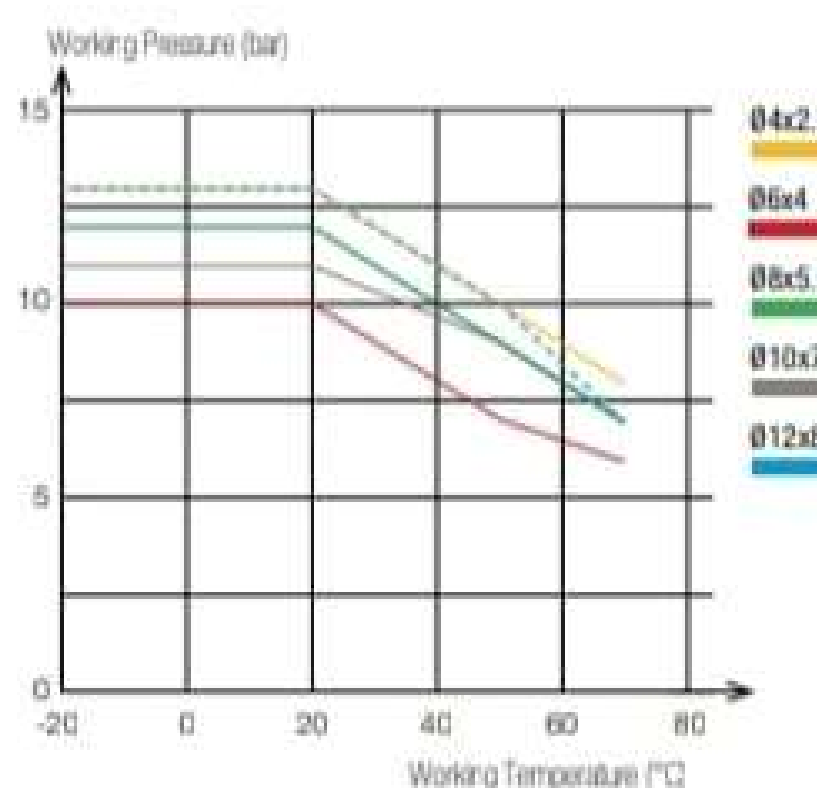
For other fitting ranges, please consult us.

Tubing Performance

Anti-Spark PU Tubing, with PVC Sheath



Anti-Spark PU Tubing, Single Layer



Tube O.D.	Tube O.D. Tolerance	Thickness and Tolerances of PVC Sheath
4 to 8 mm	+0.10 / -0.10	1mm +0.10 / -0.10
10 to 12 mm	+0.15 / -0.15	

Connected to Parker Legris push-in fittings, the calibration of Parker Legris tubing ensures perfect sealing based on NF E49-101 (inner tubing for sheathed or single layer tubing).

To calculate burst pressure, the values in these graphs should be multiplied by 3.

Multi-Tubing

Our range of multi-tubing combines high quality performance and **space optimisation** in complex pneumatic circuits **covering a wide range of environments**. **Many possible configurations** are available, depending on the pressure, temperature, flexibility and compatibility requirements.

Product Advantages

Sheathed PA Tubing

- PVC sheath resistant to external damage:
 - abrasion
 - weld spatter
 - aggressive fluids
- Helically wound: minimum bend radius, compact installation
- Simplified routing
- Easy identification of circuits
- Same technical performance as PA
- Possible number of tubes: from 2 to 12, with numbering
- Silicone-free



Twin PU Ester Tubing

- Tubes fully joined for improved solidity
- External diameter maintained after separation
- Rapid identification of circuits
- Quick and easy installation
- Simplified routing
- 3 colour combinations available
- Silicone-free

Pneumatics
Automation
Robotics
Transportation
In-Plant Automotive
Process Industry

Applications

Technical Characteristics

Tube	PA	PU
Compatible Fluids	Compressed air, chemicals, industrial fluids	Compressed air, industrial fluids
Working Pressure	Vacuum to 24 bar	0 to 14 bar
Working Temperature	-40°C to +80°C	-20°C to +70°C
Component Materials	Polyamide	Polyurethane ester

Regulations

Industrial
 DI: 2002/95/EC (RoHS), 2011/65/EC
 DI: 97/23/EC (PED)
 RG: 1907/2006 (REACH)
 Performance and chemical resistance according to DIN 73378

Packaging

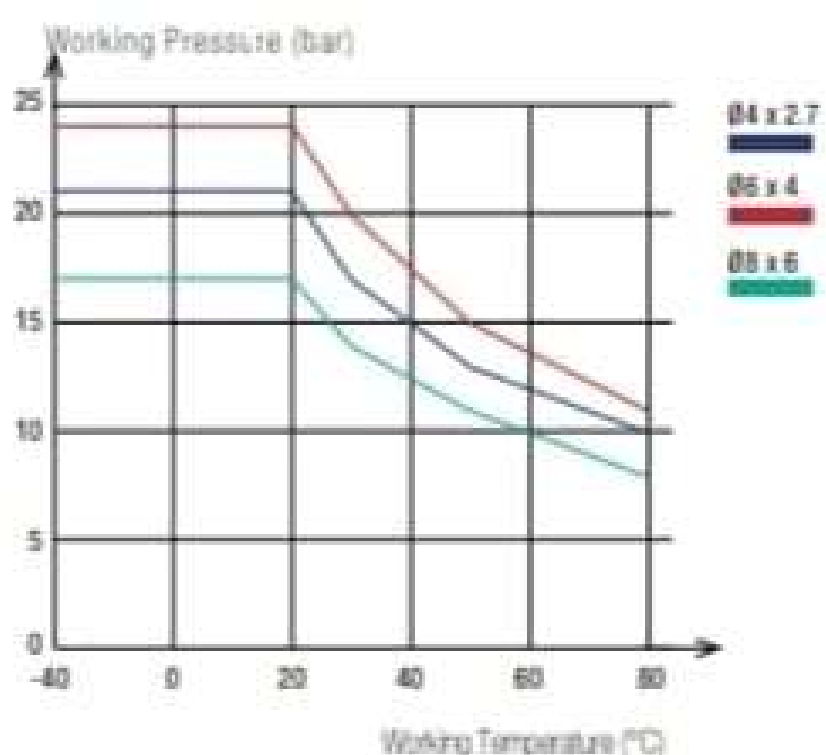
Sheathed PA Tubing:
Tubepack® 10 m, 50 m

Twin PU Ester Tubing:
Tubepack® 25 m

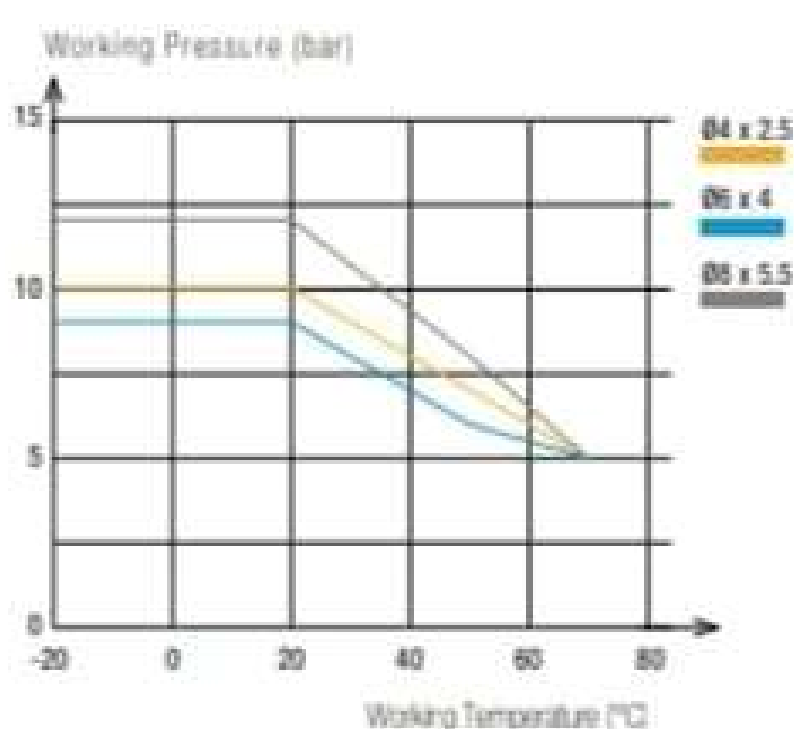
Reliable performance is dependent upon the type of fluid conveyed and fittings being used. Use is guaranteed with a vacuum of 755 mm Hg (99% vacuum).

Tubing Performance

Sheathed PA Tubing



Twin PU Ester Tubing



Material	Tube O.D.	Tube O.D. Tolerance
PA	4 mm	+0.05 / -0.08
	6 to 8 mm	+0.05 / -0.10
PU	4 to 8 mm	+0.10 / -0.10

Connected to SURTECH push-in fittings, the calibration of SURTECH tubing ensures perfect sealing based on NF E49-100 (for semi-rigid PA) and NF E49-101 (for twin PU ester).

To calculate burst pressure, the values in these graphs should be multiplied by 3.

Fluoropolymer Tubing - PFA

SURTECH **PFA** (perfluoroalkoxy) tubing offers **10 times greater durability** than other fluoropolymer tubings (PTFE, FEP and PVDF) under severe chemical and mechanical conditions. This tubing range is available in **three material grades**, offering perfect compatibility with all applications, even in extreme environments.

Product Advantages

Great Versatility

- Exceptional chemical inertia
- A flexible alternative to stainless steel tubing
- Broad range of working temperatures, from cryogenic to extreme heat
- Non-stick properties allowing conveyance of many fluids & gases
- Outstanding resistance to ageing
- Fluoropolymer with the lowest permeability
- Non-flammable
- UV-transparent
- Tube marking on request
- Silicone-free

Three Material Grades

- Clear High Purity PFA: to cover all applications, including those requiring maximum mechanical resistance
- Coloured PFA: for circuit identification
- Black Antistatic PFA: eliminates all risk of electrostatic discharge



- Food Process
- Fuel Cells
- Electrical/Electronics
- Aircraft
- Oil/Gas Industry
- Pharmaceutical
- Medical
- Chemical
- Clean Rooms

Applications

Technical Characteristics

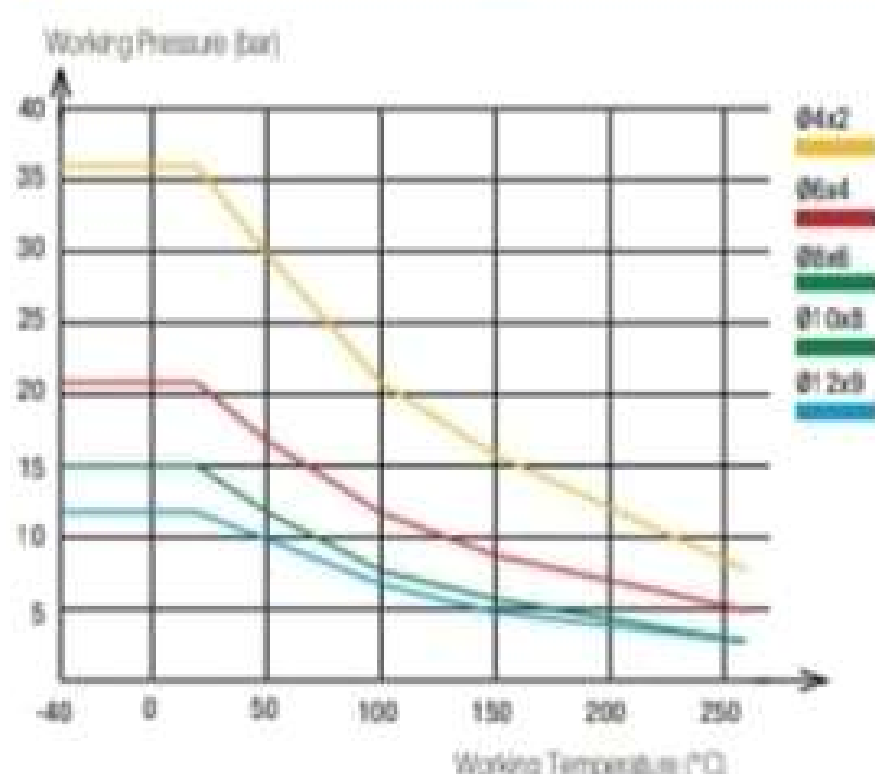
Compatible Fluids	Medical, bio-compatible, food process, gas, compressed air
Working Pressure	Vacuum to 36 bar
Working Temperature	-196°C to +260°C
Component Materials	Perfluoroalkoxy (55 Shore D) <ul style="list-style-type: none"> • High Purity PFA • Translucent coloured PFA • Antistatic PFA

Reliable performance is dependent upon the type of fluid conveyed and fittings being used. Use is guaranteed with a vacuum of 755 mm Hg (99% vacuum).

Regulations

- Medical**
USP: Class VI (A)
 External communication devices
- Industrial**
UL94 V-0 (Fire resistance)
DI: 2002/95/EC (RoHS), 2011/65/EC
DI: 97/23/EC (PED)
RG: 1907/2006 (REACH)
DI: 94/09/EC (ATEX, black tubing)
- Food Industry**
FDA: 21 CFR 177.1550
 (clear, translucent coloured)
RG: 1935/2004

Performance of PFA Tubing



Tube O.D.	Tube O.D. Tolerance
4 to 8 mm	+0.10 / -0.10
10 to 12 mm	+0.15 / -0.15

Connected to SURTECH push-in fittings, the calibration of SURTECH tubing ensures perfect sealing based on NF E49-100.

Packaging
 Tubepack: 10 m, 50 m, 100 m

To calculate burst pressure, the values in this graph should be multiplied by 3.

Technical Tubing and Hose

PA Tubing

(P. 10)



Fluids: compressed air, industrial fluids

Materials:

- 2 polyamide grades (semi-rigid and rigid)
- 7 colours

Pressure: 58 bar

Temperature: -40°C to +100°C

O.D. metric: 3 mm to 16 mm

O.D. inch: on request

Fireproof High Resistance PA Tubing

(P. 14)



Fluids: compressed air, coolants, lubricants

Materials:

- Polyamide with flame retardant additive
- 5 colours

Pressure: 50 bar

Temperature: -40°C to +100°C

O.D. metric: 4 mm to 12 mm

PU Tubing

(P. 18)



Fluids: compressed air and food industry fluids ("crystal")

Materials:

- Polyurethane ester or ether
- Polyurethane food-grade "crystal"
- 7 colours

Pressure: 12 bar

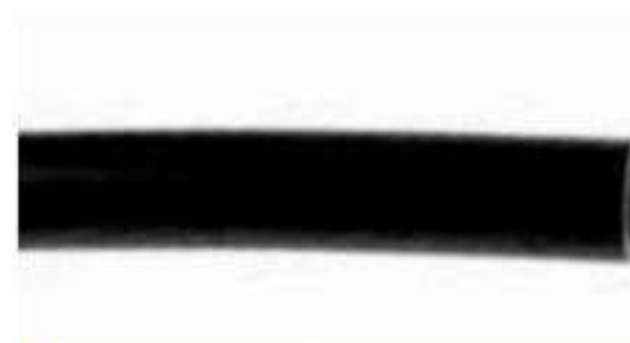
Temperature: -20°C to +70°C

O.D. metric: 3 mm to 16 mm

O.D. inch: on request

Antistatic PU Tubing

(P. 22)



Fluids: compressed air

Materials:

- Polyurethane with conductive particles
- Black ($10^2 \Omega.m$)

Pressure: 10 bar

Temperature: -20°C to +70°C

O.D. metric: 3 mm to 12 mm

FEP Tubing

(P. 28)



Fluids: many fluids

Materials:

- Fluoropolymer: fluorinated ethylene propylene, food-grade
- Transparent

Pressure: 28 bar

Temperature: -40°C to +150°C

O.D. metric: 4 mm to 12 mm

PFA Tubing

(P. 30)



Fluids: many fluids

Materials:

- 3 grades of perfluoroalkoxy
- High purity food-grade, clear
- Standard food-grade, 3 "crystal" colours
- Antistatic ($0.2 \Omega.m$), black

Pressure: 36 bar

Temperature: -196°C to +260°C

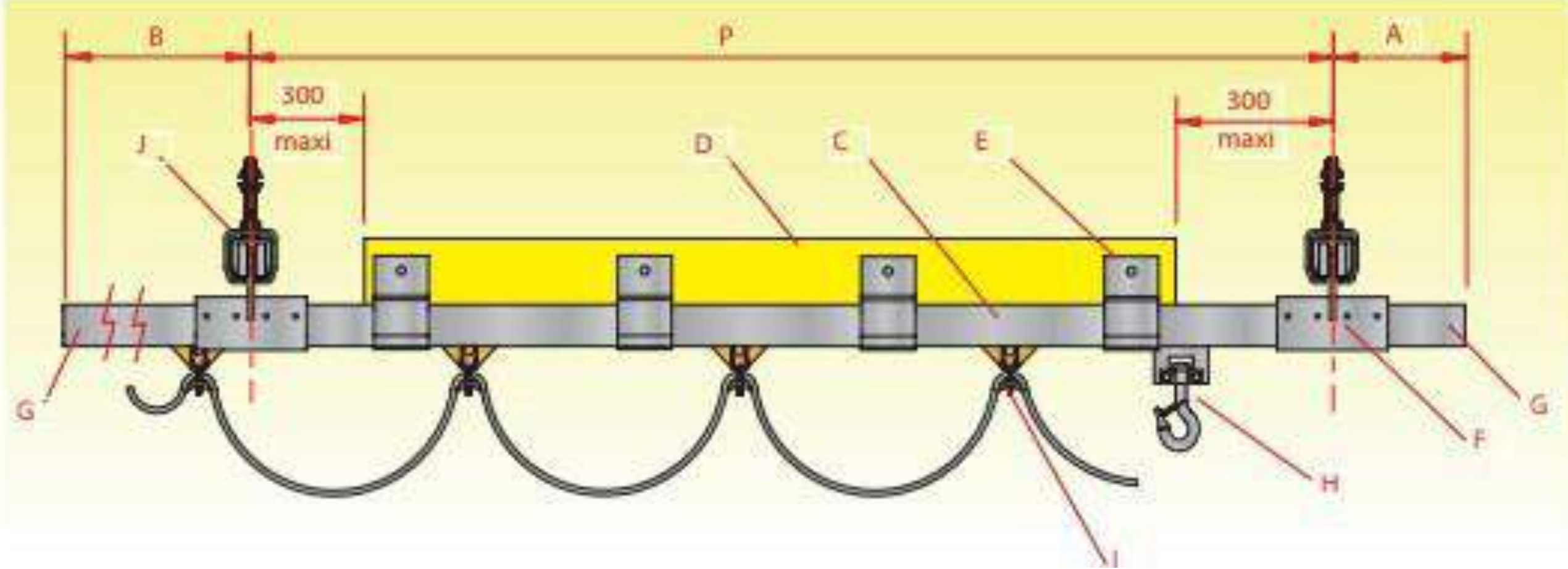
O.D. metric: 4 mm to 12 mm

Material handling systems



- • **Cranes, Jibs &**
- • **Transfer stations**
- •





TRANSBORDEURS
TRANSFER STATION

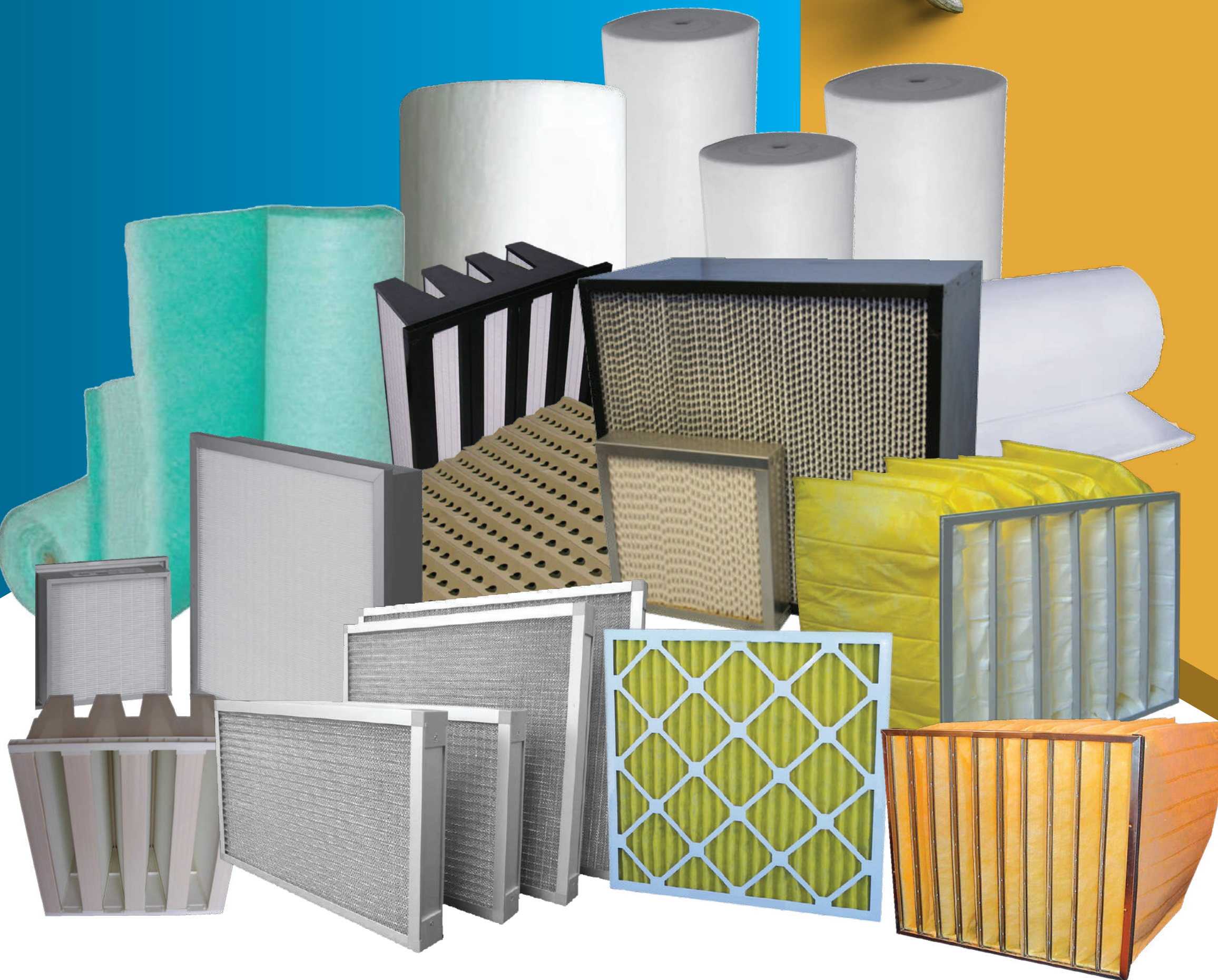
Cleaner the Environment, healthier the Life...



SURTECH
PSM



Spray booth filter & Air filters



www.surtechpsm.com

Cleaner the Environment,
healthier the Life...



SURTECH
PSM

Ceiling Filter

Surtech Ceiling Filter Media is manufactured from thermally bonded synthetic/polyester fiber graded density diffusion media for uniform flow in the paint booth. Surtech Ceiling Media has scrim net/nylon backing for mechanical support and to avoid fiber migration at air outlet side.

Surtech Ceiling Filter Media is available in cut to size as per customer requirement and standard roll size as mentioned below.

1. VA560G- with takifier on the surface.
2. VA660G - with takifier in the depth.

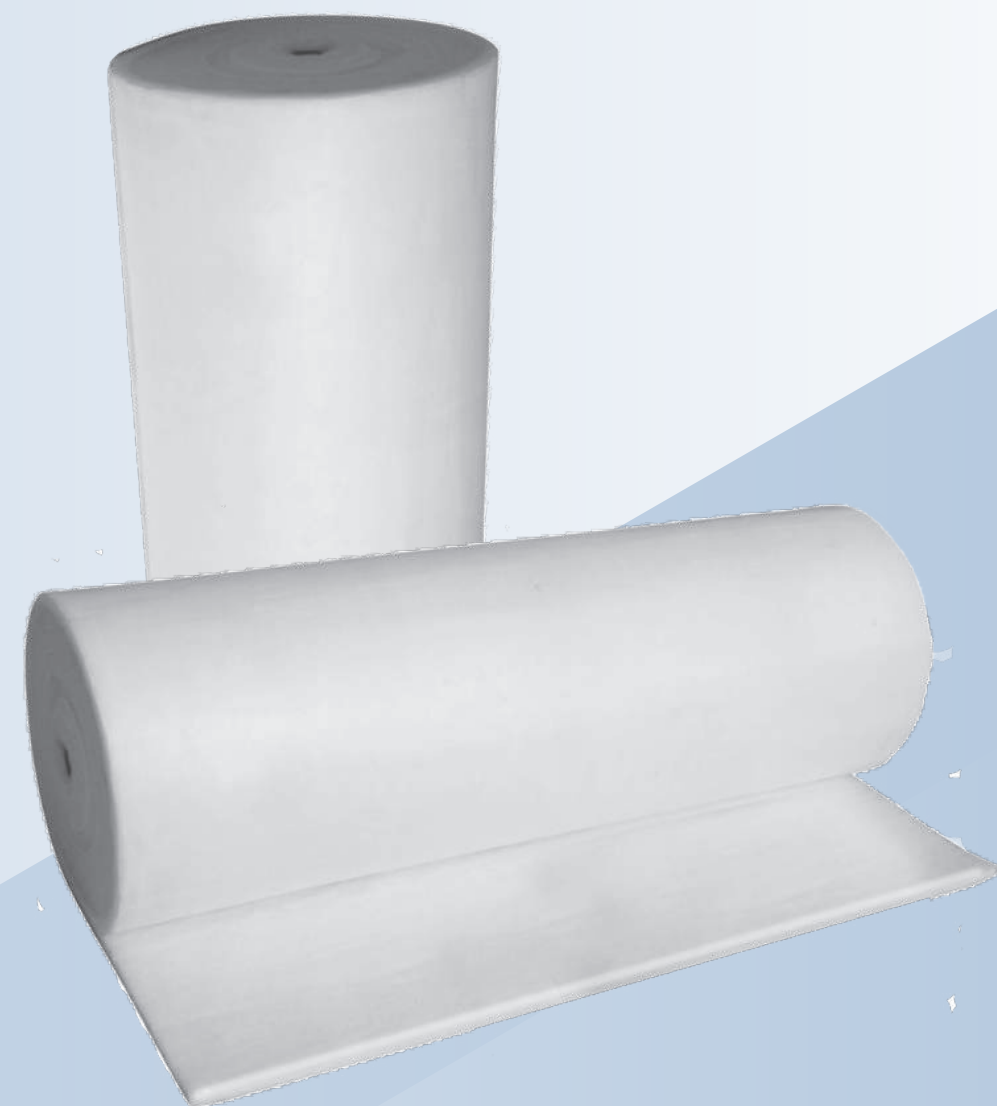
Standard roll size- 0.85 /1.6/2.0/2.1 x22 mtr

VA 500 Surface Glue

Model	VA 500 Dry Type
Weight	500gr./sqm.
Thickness	22 mm
Grade	F5

VA 660 Solid Glue

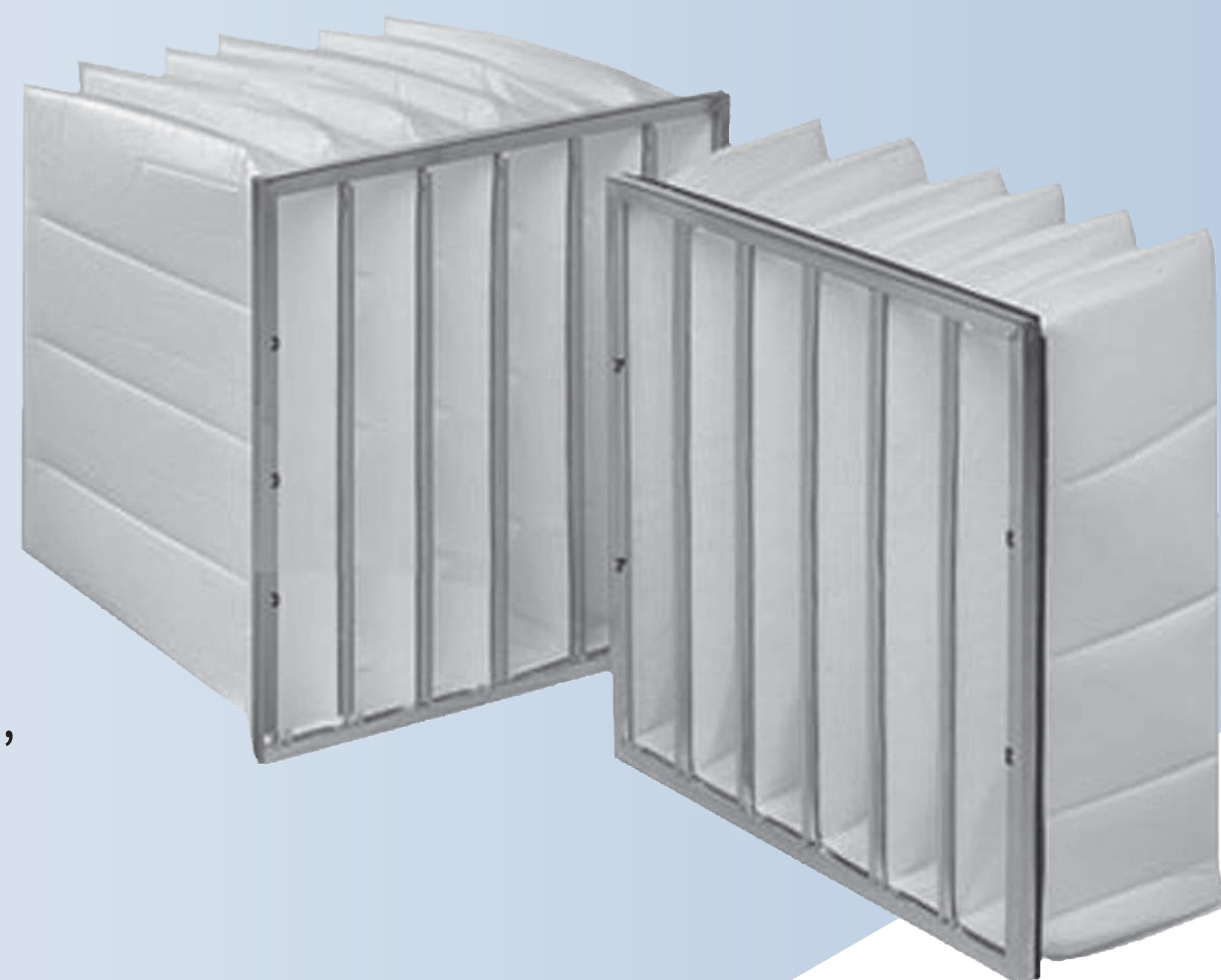
Model	VA 660
Weight	660gr./sqm.
Thickness	22mm



Pocket Filter

Surtech Poket Filter Media is manufactured from thermally bonded synthetic/polyester fiber graded density of polyester fiber. the pocket are available ultrasonically welded with diamond spacer or stitch type assembled in the GI or AL. frame.

The pocket filter are used where extended surface area is required. the application HVAC, paint booth, intake of GT compressore etc.



Paint Arrestor Series

Paint Arrestor FV-50 / FV-100

Surtech Arrestor Media is manufactured from hard glass fiber weaved shape in graded density with compressed layer at air out let side to ensure fine paint particle trapping. these are available in different thickness as per paint booth system requirement. the main application paint booth exhaust.

Model	FV-50	FV-100
Weight	250gr./sqm.	300gr./sqm.
Thickness	60 mm	80 mm

Technical specifications can be available on request.



Columbus Type Paint Arrestor

Columbus type kraft paper paint arrestor media is new technology environment friendly to replace conventional glass fiber pad. This media is manufactured from different opening layers stitch together in progressive manner. This media can be use further by peeling of choaked layer. These media are available in different qty of layers as per requirement. the main application is paint booth exhaust.





**SURTECH
PSM**

Spray Booth Filters



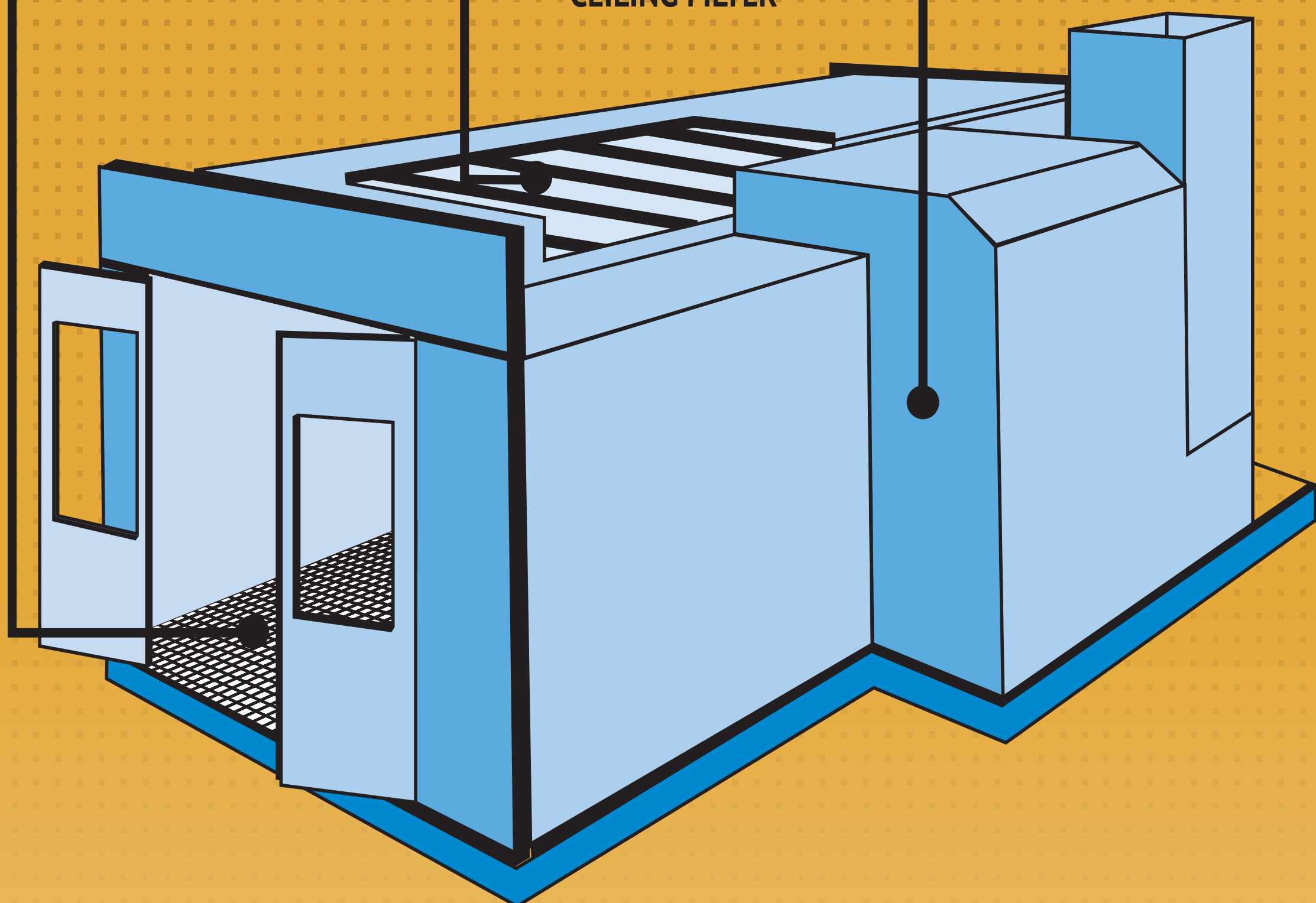
- (1) GLASS FIBER
- (2) ANDREA FILTER
- (3) COLUMBUS FILTER



- (1) DRY CEILING FILTER
- (2) SURFACE GLUE CEILING FILTER
- (3) LAYERED GLUE CEILING FILTER



- (1) PRE-FILTER ROLL



Dealer Stamp & Address

Surtech PSM

We value your time & appreciate your interest in our company. Surtech PSM is in Industrial Finishing business with core competency in design, engineering, procurement, construction and commissioning of surface finishing plants for automotive & general purpose painting.

PLOT NO. G1-128A, RIICO INDUSTRIAL AREA KHUSHKHERA, (RAJ).

301707+91-9625716531, +91-8076722141, +91-9899333748

info@surtechpsm.com

www.surtechpsm.com